

# TIMELINE

**13,000 years ago** (or more): People are living in Montana.

**1492** Columbus reaches North America.

**1720** (approximately): Horses arrive in Montana.

**1775** Smallpox epidemic kills many Montana Indians.

**1776** The United States declares independence from Great Britain.



**1804–1806** Lewis and Clark Expedition

**1807** First fur trading post in Montana

**1830s** Montana fur traders turn from beaver to bison.

**1833–1834** Artist Karl Bodmer travels up the Missouri River painting portraits of American Indians.



**1837** Smallpox epidemic kills many Montana Indians.

**1841** Father DeSmet builds St. Mary's Mission.

**1847** Sheep arrive in Montana.

**1850s** Cattle ranching begins in Montana.



**1851** First Fort Laramie Treaty

**1855** Lame Bull and Hell Gate Treaties



**1862** Montana gold rush begins; Congress passes the Homestead Act.

**1864** Montana becomes a territory.



**1866** A typical miner's cabin

**1868** Second Fort Laramie Treaty

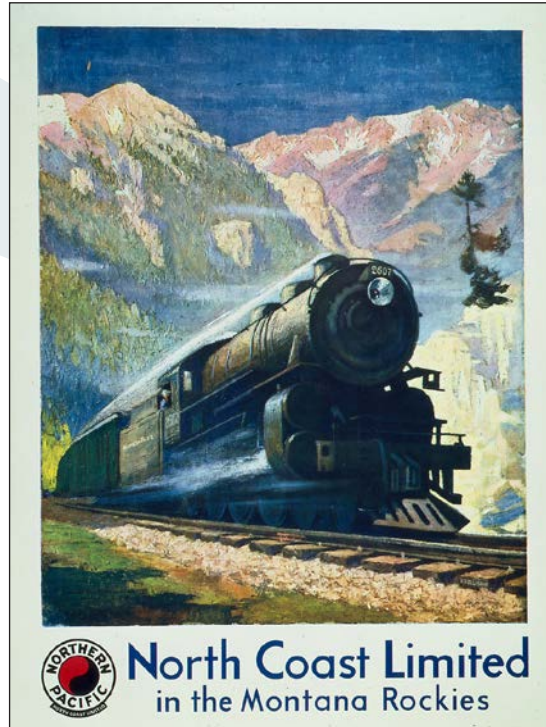
**1870** 20,438 non-Indians live in Montana.

**1872** Yellowstone National Park established



**1876** Battle of the Greasy Grass (Battle of the Little Bighorn)

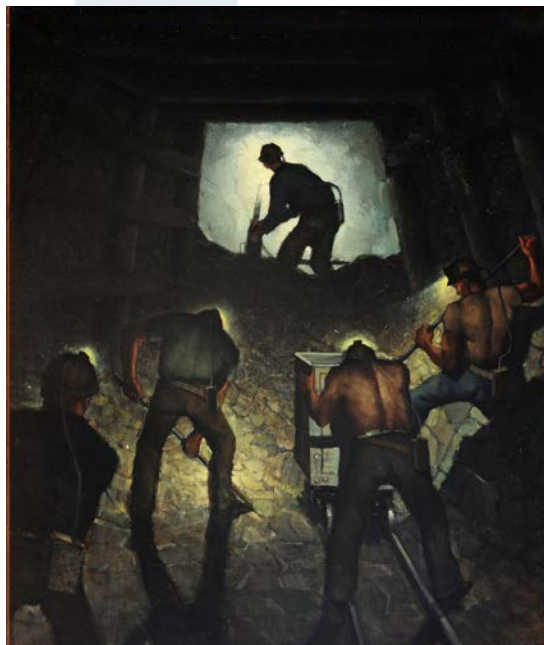
**1877** Nez Perce War



**1880** First train arrives in Montana; beginning of the Indian boarding school era

**1882** Crow Reservation reduced by 1.5 million acres.

**1883** Northern Pacific Railroad completes transcontinental line; fewer than 200 bison remain on the plains; copper boom begins in Butte.



**1886–87** Hard Winter (end of the open-range cattle boom)

**1889** Montana becomes a state.



**1896** Twenty-fifth Infantry troops test bicycle technology by riding through Yellowstone National Park.

**1900** 243,000 non-Indians live in Montana.



**1904** First Crow Fair held

**1905** Creation of the U.S. Forest Service

**1907** Chicago, Milwaukee, St. Paul, and Pacific Railroad arrives in Montana.

**1909** Enlarged Homestead Act

**1911** First Hutterite colony is established; pilot Cromwell Dixon becomes the first person to fly across the Continental Divide.



**1914–1918** World War I



**1916** Creation of the National Park Service

**1917** Drought begins.

**1918** "Spanish flu" pandemic

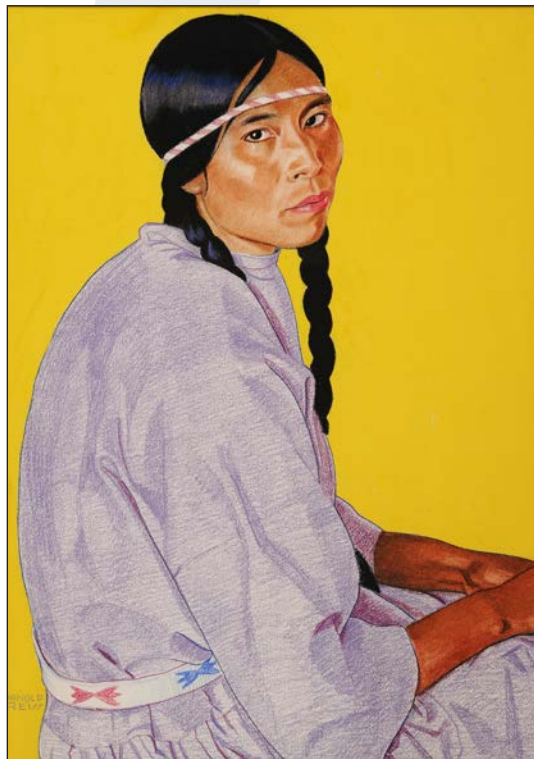




**1920** Population of Montana is 548,889 (one-quarter of the population is foreign born); first commercial production of oil in Montana

**1921** Sugar companies begin to recruit Mexican farmworkers.

**1924** Indian  
Citizenship Act



**1928** Montana has approximately 50 miles of paved highway.



**1929** Beginning of the Great Depression



**1933-1940** Fort Peck Dam built by the Public Works Administration (PWA)

**1939** Montana has approximately 7,200 miles of paved highway.

**1939-1945** World War II



**1942–1944** The U.S. Army trains sled dogs for military service at Camp Rimini west of Helena.



**1950** Population of Montana is 593,000.

**1951** Williston Basin oil field discovered



**1955** Open-pit mining begins in Butte.

**1954–1975** Vietnam War

**1964** The U.S. Congress passes the Wilderness Act.



**1972** Montana adopts a new state constitution.

**1979** Hmong refugees arrive in Montana.

**1980** Population of Montana is 795,317.

**2005** Judith Gap Wind Farm opens; the Montana legislature funds Indian Education for All.



**2010** Agriculture remains Montana's number one industry.

**2020** Population of Montana is 1,084,225.

# IMAGE CREDITS

## TIMELINE

**Montana Historical Society is abbreviated as MHS.**

p. 71, Lewis and Clark Expedition in 1804 by Dean Cornwell, oil on canvas, 1954, MHS X1955.10.01, gift of New York Life Insurance Company

p. 72, top, Dakota Woman and Assiniboin Child by Karl Bodmer, print, ca. 1839-1849, MHS X1970.27.04

p. 72, bottom, The Roundup by Charles M. Russell, oil on canvas, 1913, MHS X1952.01.07, Mackay Collection of C. M. Russell Art

p. 73, top, Signing the 1855 Hell Gate Treaty at Council Grove, E.S. Paxson, oil on linen, 1914, 65" x 67". Missoula County Art Collection. Photo: © 2000 Chris Autio, courtesy Missoula Art Museum

p. 73, bottom, My Cabin in Montana, 1866 by Peter Toft, watercolor, 1866, MHS 1996.89.01

p. 74, top, North Coast Limited in the Montana Rockies by Wilhelm Gustav Krollman, poster, ca. 1930, MHS 1980.61.162, Haynes Foundation Collection, gift of Mrs. Isabel Haynes

p. 74, bottom, Miners in the Stope by Paul Sample, oil on canvas, 1937, MHS X1966.21.10, gift of Francis Kelley Wood, Mary Kelley Doubleday, and George Hepburn; Cornelius Kelly Collection

p. 75, top, Bicyclists' Group on Minerva Terrace, Yellowstone National Park by F. Jay Haynes, 1896, MHS

H-03614

p. 75, bottom, Flag bearer crossing the Little Big Horn by Joseph Henry Sharp, ca. 1906, MHS Lot

035 M07

p. 76, top, Cromwell Dixon at Montana State Fair by N. A. Forsyth, 1911, MHS ST001.458

p. 76, bottom, Company-H, Helena, Mont., Oct. 24, 1917, by Edward M. Reinig, MHS 953-642

p. 77, top, A Gusher by Great Falls Photo View Col, ca. 1925, MHS 957-556

p. 77, bottom, Both Striking Woman by Winold Reiss, pastel, 1927, MHS X1973.04.02, gift of Louis H. Hill



# IMAGE CREDITS

## TIMELINE

**Montana Historical Society is abbreviated as MHS.**

p. 78, top, Automobile pulled by horse by L. A. Huffman, ca. 1920, MHS 981-836

p. 78, bottom, Fort Peck Dam Spillway Gate construction by the U.S. Army Corps of Engineers, 1937, MHS Fort Peck Dam Collection, Box 1 Folder 3/15

p. 79, top, Kenya by John W. Beauchamp, oil on canvas, ca. 1943, MHS 1995.101.01

p. 79, middle, Berkeley Pit & Butte Hill Copper Mining Operation, ca. 1955, MHS Lot 26 B1/10.05

p. 79, bottom, Bud Moore tending a campfire near Lion Pass, 1983, Bud Moore Collection, Archives and Special Collections, Mansfield Library, University of Montana, UM digital image 4579

p. 80, top, Converse high-tops by Evelyn Eagleman (Cree), 2005, MHS 2005.42.01

p. 80, bottom, Wilsall Elevators by Clyde Aspevig, MHS 1997.16.01, gift of Friends for the People of Montana